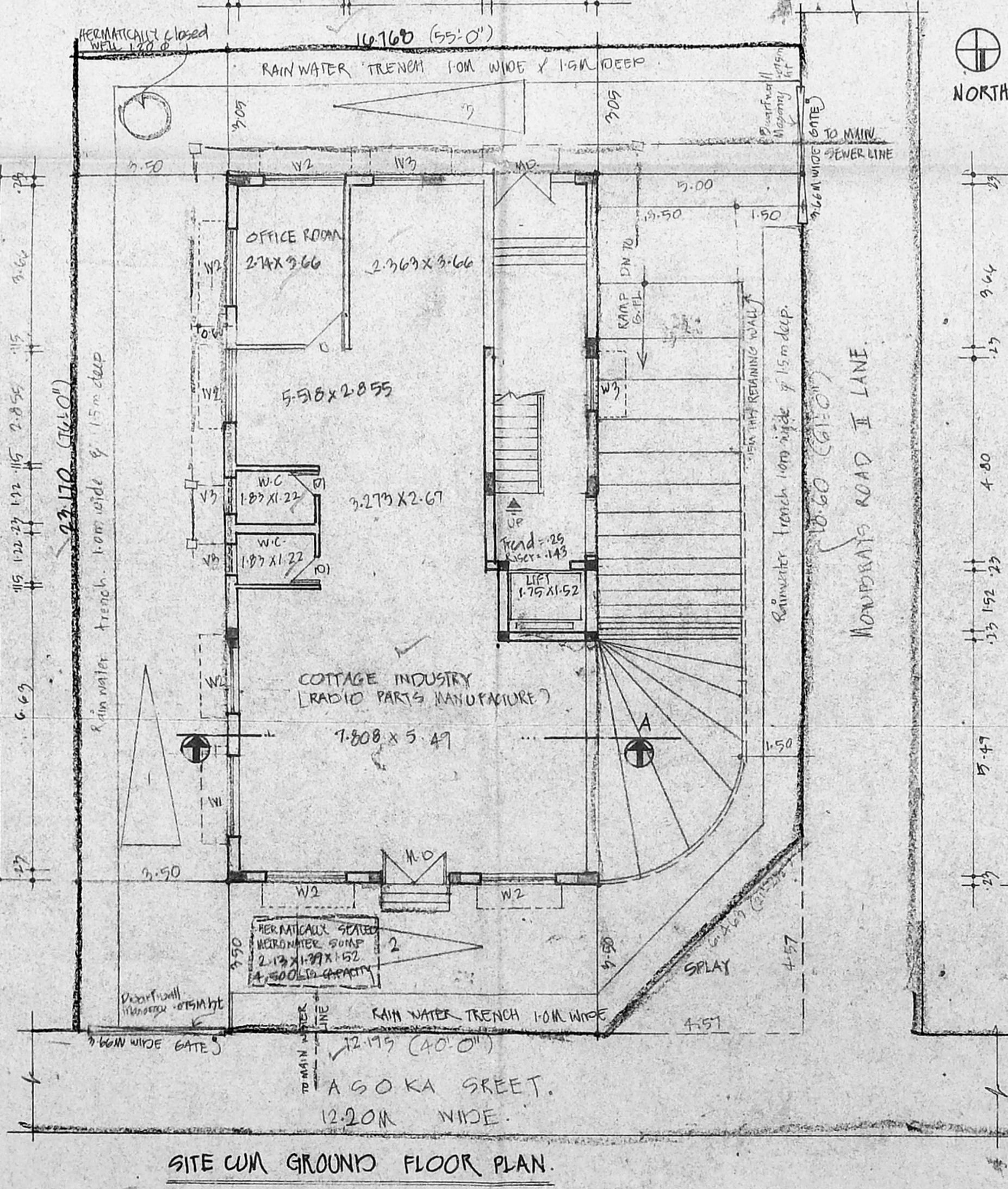
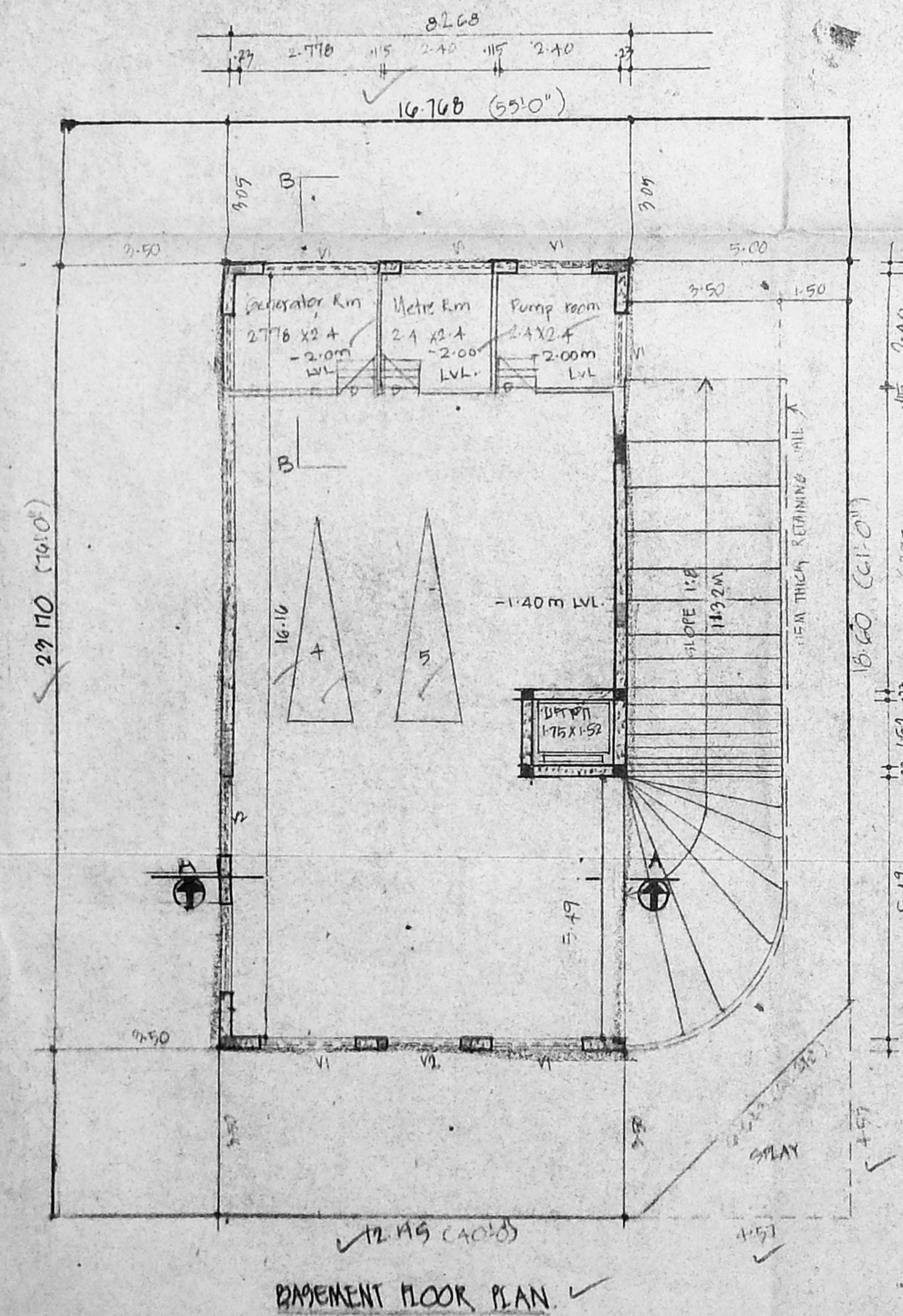
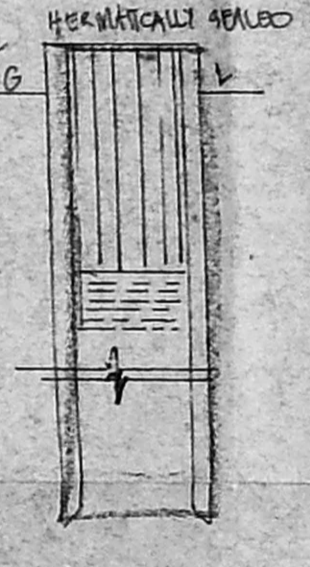
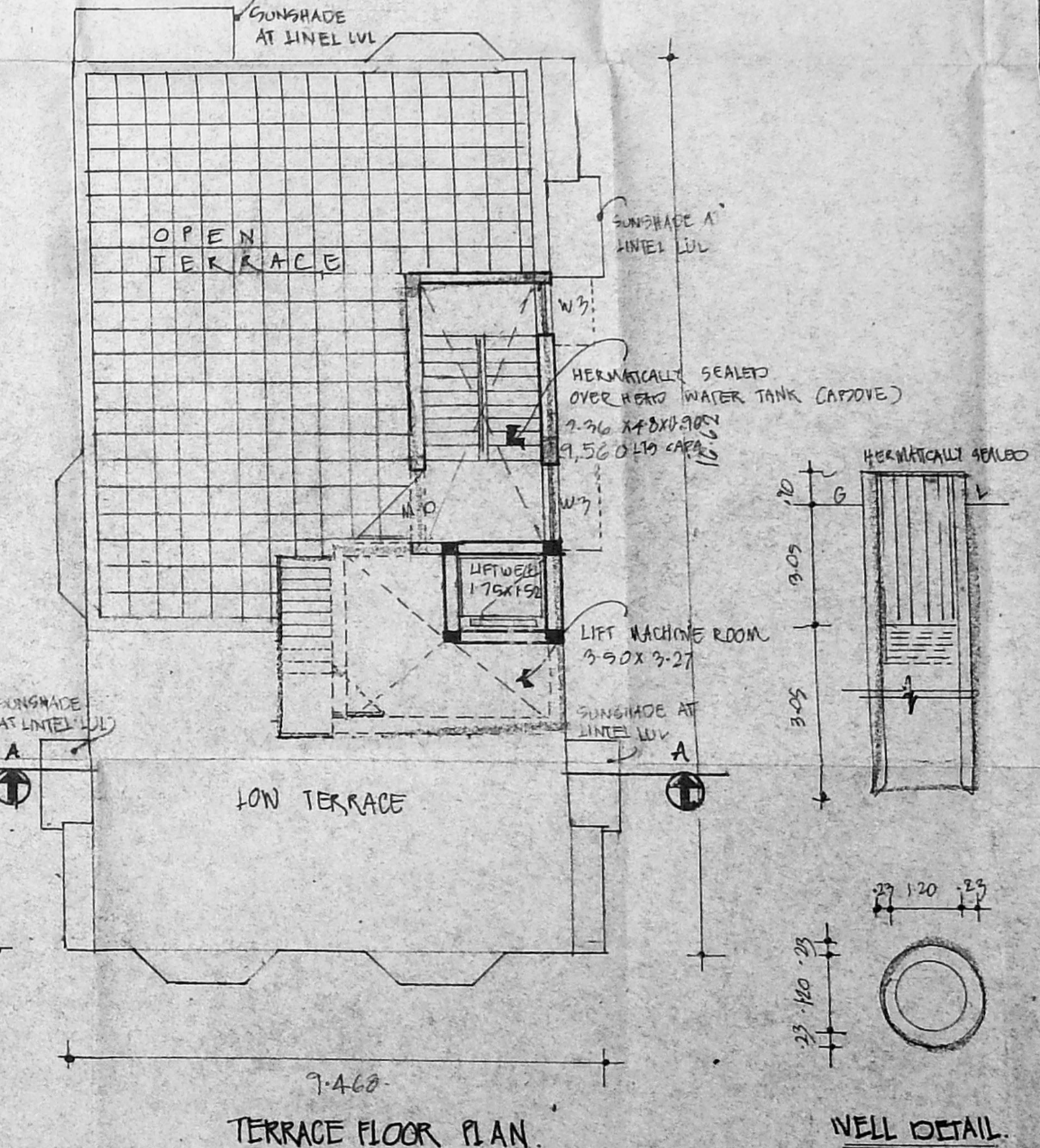
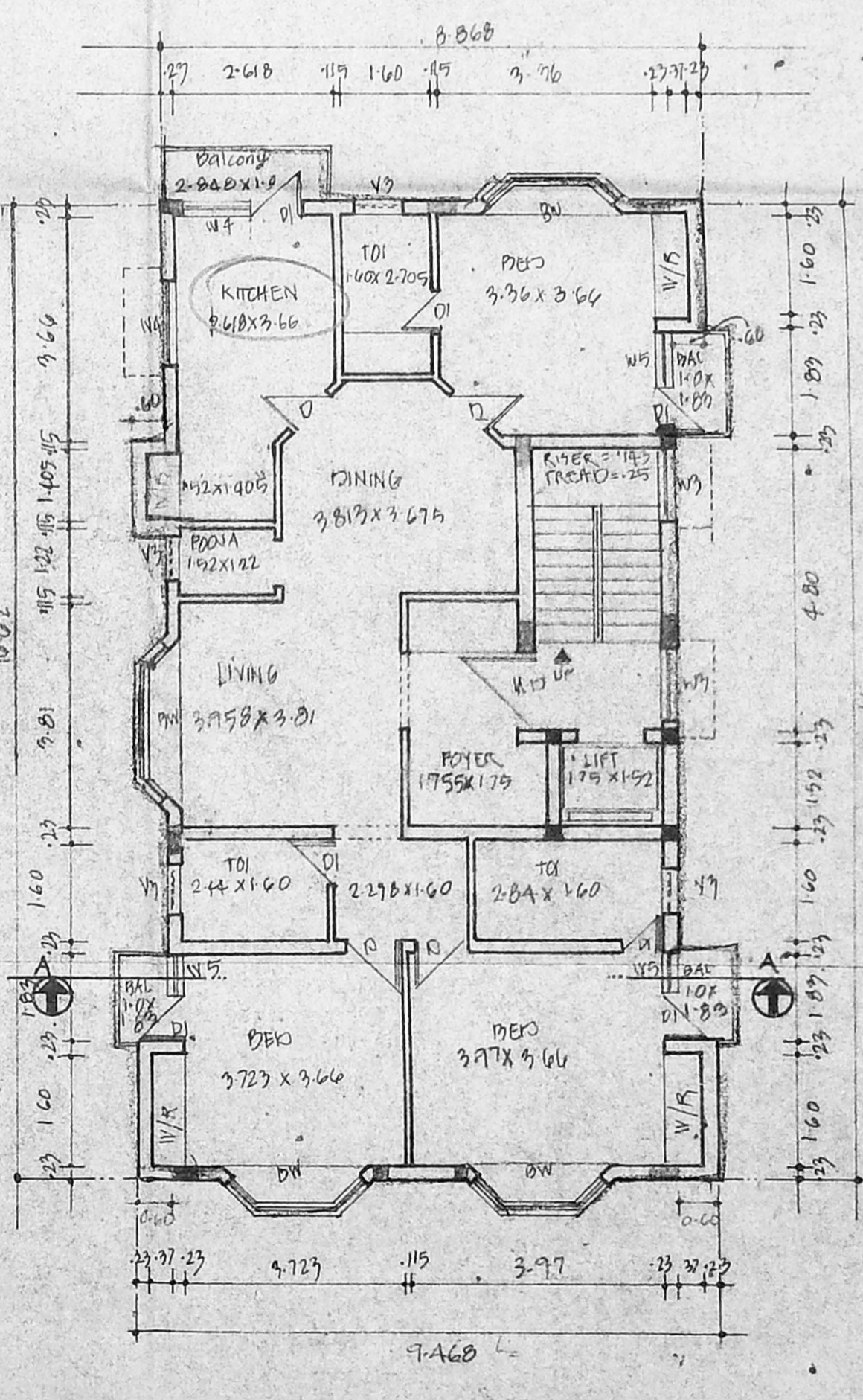
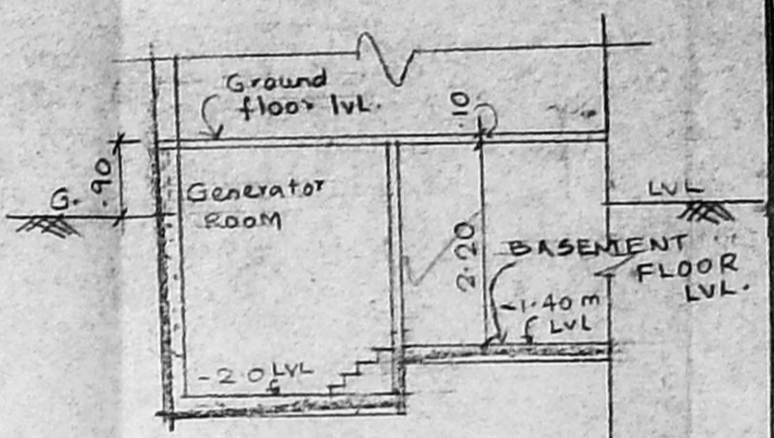
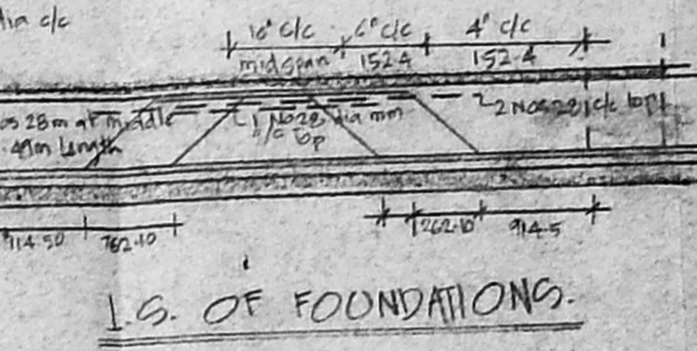
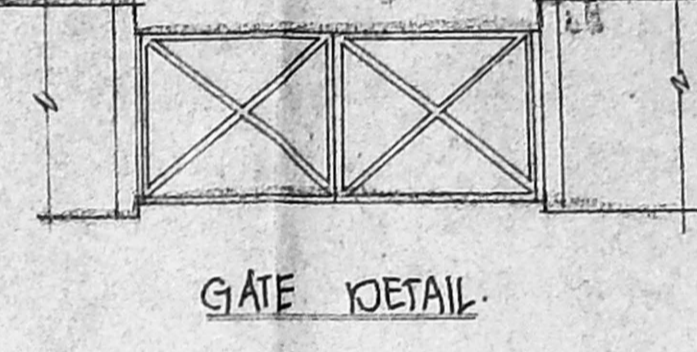
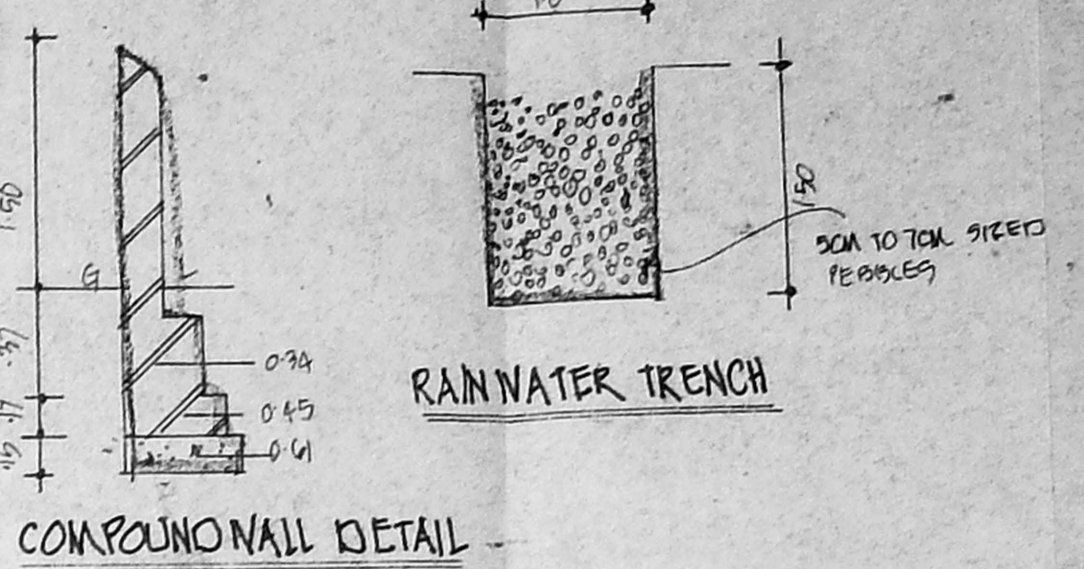
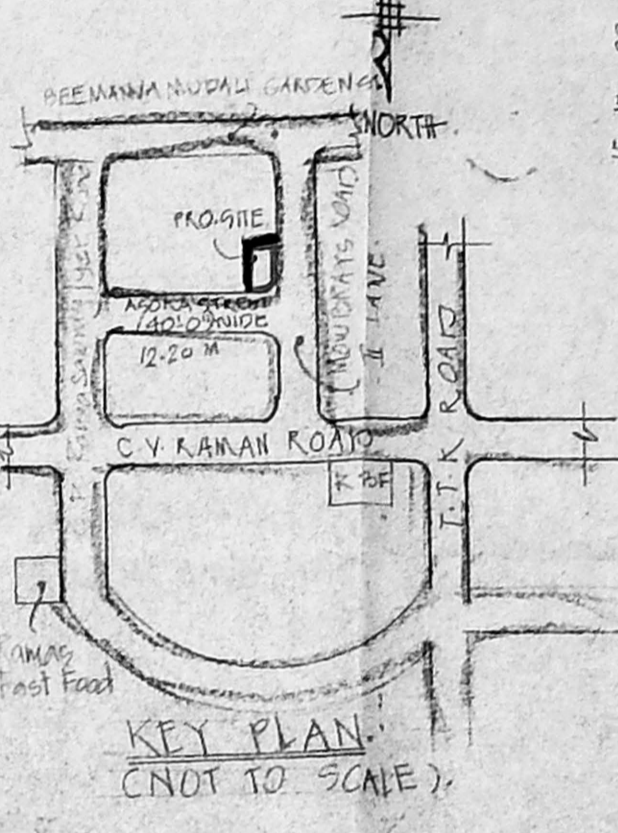
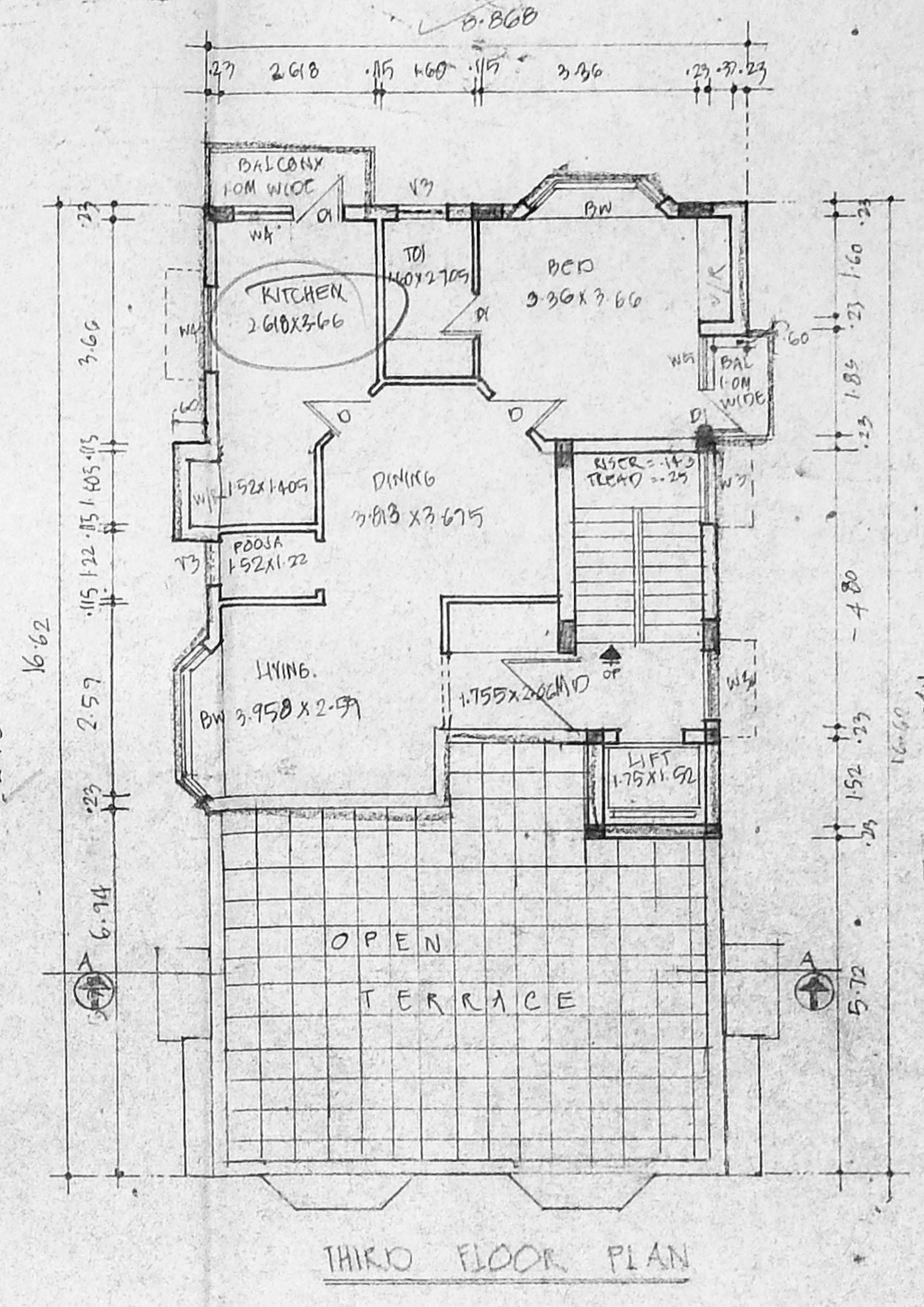
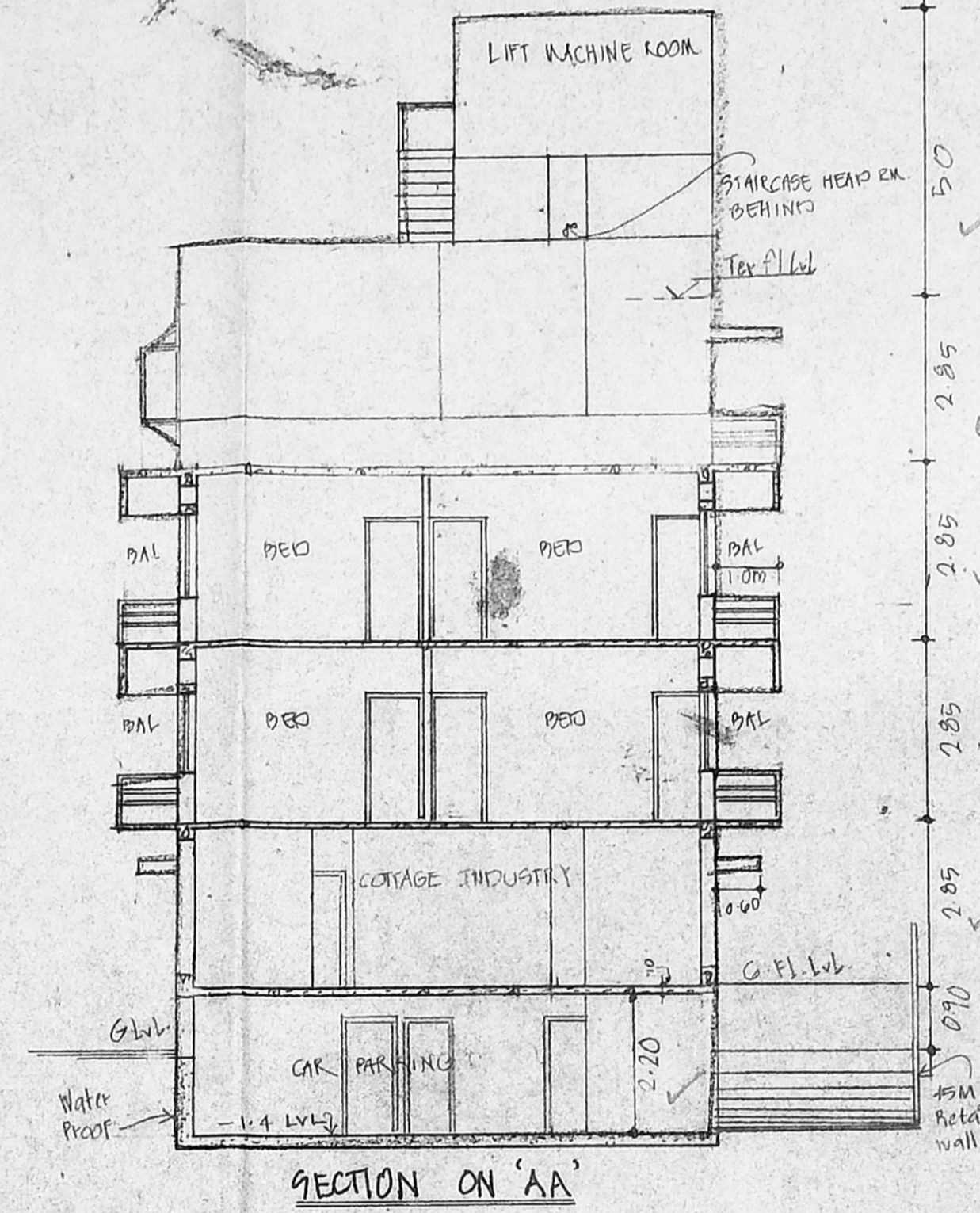


B/25672/29/98  
 Planning Permit No.  
**APPROVED**  
 THE CONDITIONS IN  
 THIS LETTER  
 B/28610/97 Date 2-98  
 FOR THE SECRETARY  
 CHENNAI MUNICIPAL  
 DEVELOPMENT AUTHORITY  
 CHENNAI-600 008.



**SCHEDULE OF JOINERIES**

M-D	MAIN DOOR	1.22 x 2.09
D	DOOR	0.70 x 2.09
D1	DOOR	0.70 x 2.09
W1	WINDOW	1.22 x 1.53
W2	WINDOW	0.70 x 1.53
W3	WINDOW	1.22 x 1.53
W4	WINDOW	0.70 x 1.53
W5	WINDOW	1.22 x 1.53
W6	WINDOW	0.70 x 1.53
W7	WINDOW	1.22 x 1.53
W8	WINDOW	0.70 x 1.53
W9	WINDOW	1.22 x 1.53
W10	WINDOW	0.70 x 1.53
W11	WINDOW	1.22 x 1.53
W12	WINDOW	0.70 x 1.53
W13	WINDOW	1.22 x 1.53
W14	WINDOW	0.70 x 1.53
W15	WINDOW	1.22 x 1.53
W16	WINDOW	0.70 x 1.53
W17	WINDOW	1.22 x 1.53
W18	WINDOW	0.70 x 1.53
W19	WINDOW	1.22 x 1.53
W20	WINDOW	0.70 x 1.53
W21	WINDOW	1.22 x 1.53
W22	WINDOW	0.70 x 1.53
W23	WINDOW	1.22 x 1.53
W24	WINDOW	0.70 x 1.53
W25	WINDOW	1.22 x 1.53
W26	WINDOW	0.70 x 1.53
W27	WINDOW	1.22 x 1.53
W28	WINDOW	0.70 x 1.53
W29	WINDOW	1.22 x 1.53
W30	WINDOW	0.70 x 1.53

**AREA STATEMENT**

PLOT AREA	= 389.828 M <sup>2</sup>
BASEMENT FLOOR AREA	= 2.867 M <sup>2</sup>
GROUND FLOOR AREA	= 197.414 M <sup>2</sup>
FIRST FLOOR AREA	= 155.400 M <sup>2</sup>
SECOND FLOOR AREA	= 155.400 M <sup>2</sup>
THIRD FLOOR AREA	= 90.809 M <sup>2</sup>
TOTAL	= 549.710 M <sup>2</sup>
F.S.I. ALLOWED	= 1.500 x 549.710 = 824.565 M <sup>2</sup>
F.S.I. ACHIEVED	= 1.437 x 549.710 = 789.410 M <sup>2</sup>
PLOT COVERAGE	= 43.464%
PARKING AREA	= 110.852 M <sup>2</sup>
Service Area	= 22.675 M <sup>2</sup>

**SPECIFICATION**

**FLOORING** MOSAIC FLOORING  
**FOUNDATION** USING RCC FOUNDATION WORK  
**STRUCTURE** BRICKWORK IN CARBON R.C.C. 12.4 IN  
**ROOF** SUNSHADE HIMES BEAMS ETC  
**WEATHERING** BRICK BELL LIME CONCRETE BELOW  
**COARSE FINISHES** EXTERIOR INTERIOR PAINTED  
**JOINERIES** BEST INDIAN TEAK WOOD

**PROPOSED BUILDING AT**  
 PLOT NO. 7, IN THE LAYOUT OF  
 R.G. NO. 9631/43, DOOR NO. 6,  
 ASHOKA STREET, MADRAS.  
 BLOCK NO. - T2,  
 DIVISION - MYLAPORE - BT

**COLOUR INDEX**

PROPOSED ROAD BOUNDARY  
 CENTER LINE  
 WATER LINE

ALL DIMENSIONS ARE IN METRE  
 SCALE 1:100

**OWNERS SIGNATURE**

SIVA ANBARASAN  
 ANDO & FAIZAL  
 REGD. ARCHITECT C.A. NO. 1076,  
 53/11, 1st Floor, Sri Rangan Avenue,  
 Pantheon Road, Egmore,  
 Madras - 600 008  
 PHONE - 8594302

SIVA ANBARASAN  
 NARA DIGA ENGLAND M.C.A. A.H.A  
 REGD ARCHITECT RANO. RI. CA. NO. 12167.